
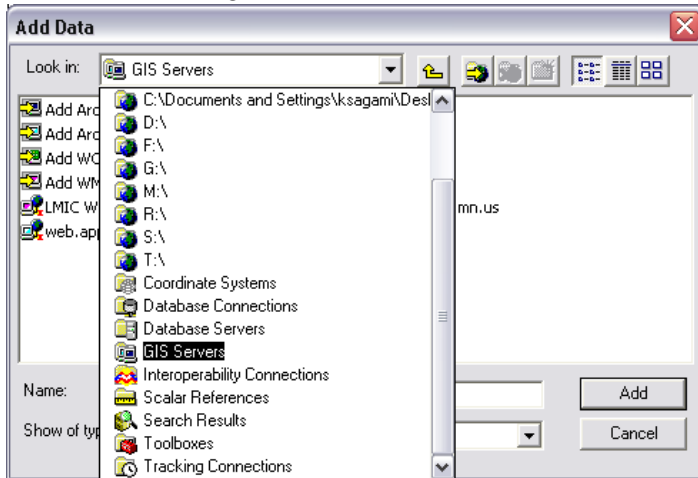


Instructions on adding Server to ArcGIS

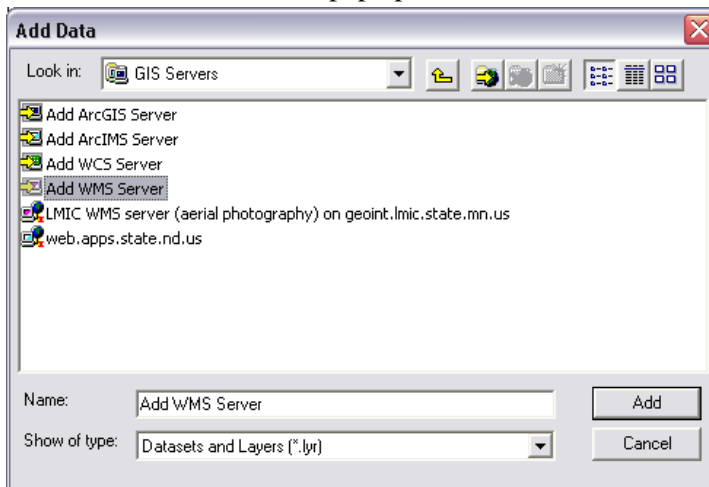
First time adding server:

[http://web.apps.state.nd.us/ndhub/All_Elevation/MapServer/WMSServer?\"](http://web.apps.state.nd.us/ndhub/All_Elevation/MapServer/WMSServer?\)

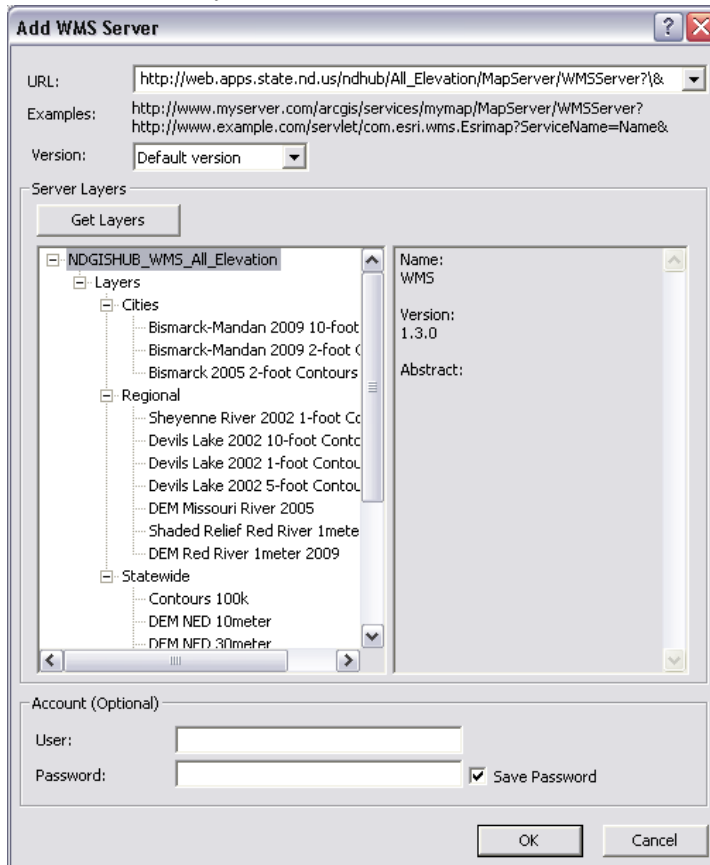
1. Open ArcMap and click on 'Add Data'. 
2. Look in the Catalog, and click on the 'GIS Servers'.



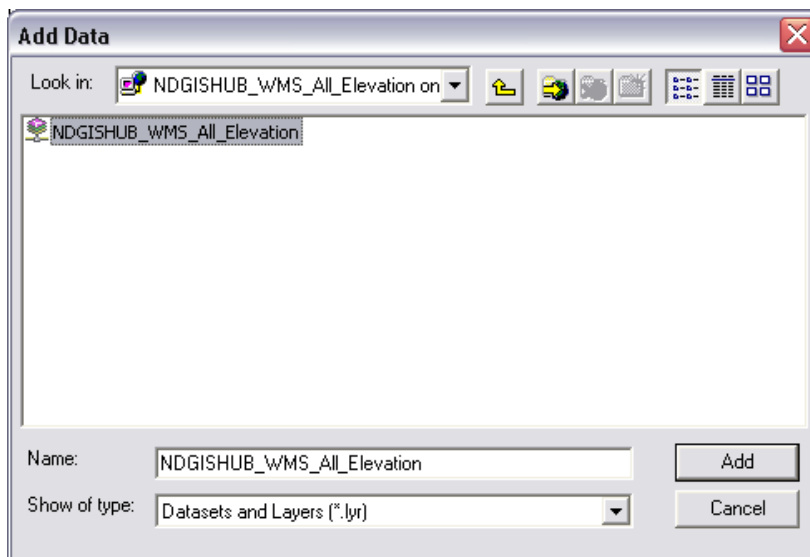
3. Highlight 'Add WMS Server' so that it appears in the Name window, and hit 'Add'. An 'Add WMS Server' window will pop up.



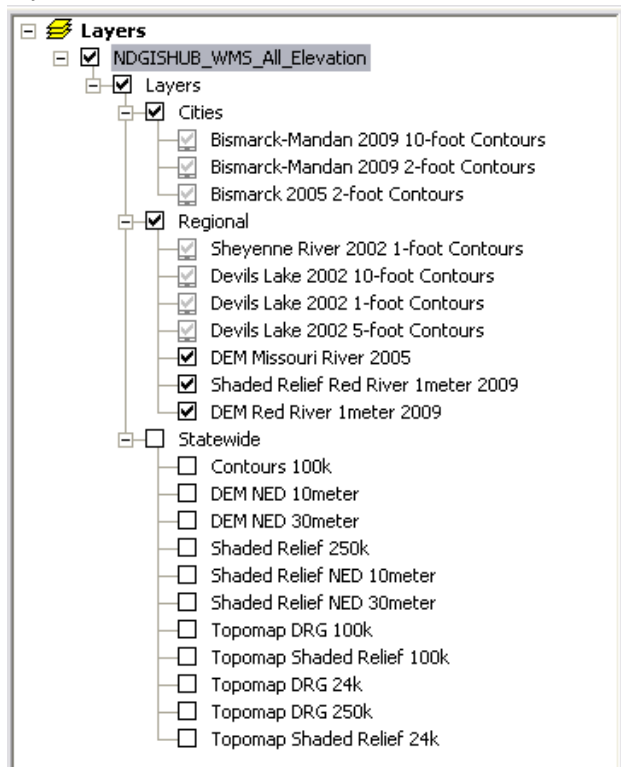
4. To bring up the Imagery server, type **http://web.apps.state.nd.us/ndhub/All_Elevation/MapServer/WMServer?}&** in the URL window (do not include the quote marks). You can click on the 'Get Layers' button to see a list of the layers available under the wms. Click 'OK'.



5. Now the server is connected. Any the layers are needed just click the add button navigate to the server and add it in.



- The different layers can be viewed by clicking on the '+' and '-' to open and close the different layers.



Updating the connection:

If you have already added ND GIS HUB Server to ArcMap, and ND GIS HUB has added new data layers since then, in versions earlier than 9.3 you may need to refresh the connection in order to see the new layers.

- Open ArcCatalog
- In the catalog tree, browse to find 'GIS Servers'
- Expand the list to show the GIS Server names
- Right click on 'NDGISHUB_WMS_All_Elevation on web.apps.state.nd.us' and choose 'Refresh'

